

ISOMETRIC

DETAIL B
SCALE: 1/10

DETAIL C
SCALE: 1/10

DETAIL A
DESIGN CRITERIA
SCALE: 1/10

TIRE SIZE : 275/70R x 22.5 "H"
 WHEEL SIZE: 8.25 X 22.5 ALL ALUMINIUM
 SUSPENSION :
 FRONT: CP25Y09RCM_40BC 8.5RH
 MIDDLE : CU25-S43CM-KC02A
 REAR : CUU-S45CM-KC02AS_LIFT AXLE
 RIDE HEIGHT: 8.5"
 AXLE TRACK : 76-1/2"

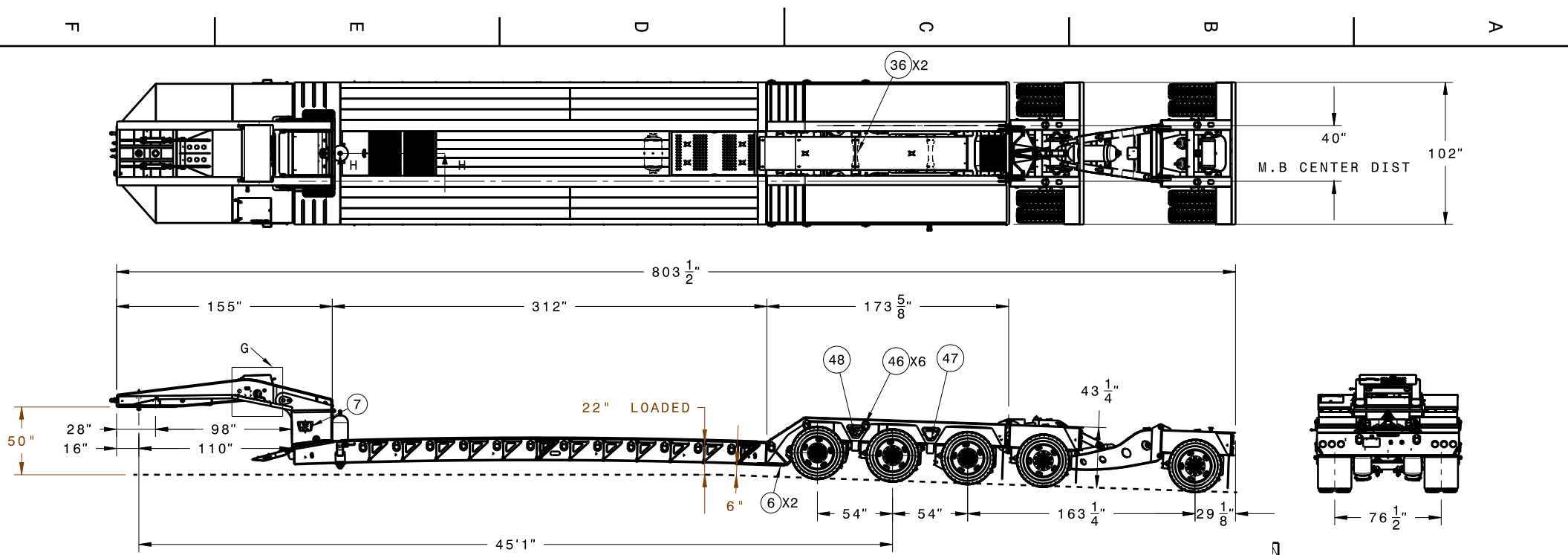
ITEM NO.	PART NO.	QTY	DESC	WT. EA	ET. EA
1	00442007	1	26+LDH 110in & 98in SW DETACHABLE GOOSENECK GENERAL ASSEMBLY_H	3155.48	**
2	00528025	1	LOWBOY TRAILER DECK STRUCTURE ASSEMBLY_H	7982.56	**
3	00528198	1	54IN AXLE TAIL GENERAL ASSEMBLY_H	4339.14	**
4	00529795	1	NITRO STINGER ASSEMBLY_H	2651.72	**
5	00146160	1	GL1505-151009LOCK PIN CYLINDERS FOR HYDRAULIC FLIP AXLE 1.5 x .75 x 10_B(20-232)	**	**
6	00101042	2	MAIN DECK TO REAR DECK STRAP_1	23.9	47.8
7	00449183	1	DISCONNECT PLATE (2) AIR (1) 7-WAY ELECTRICAL HYDRAULICS_146	3.93	**
8	00515317	2	HYDRAULIC LOCKING BRACKETS PINS_BMC(GPN REQUIRED)	6.46	12.92
9	00112381	2	CYLINDER_0	**	**
10	00112382	2	PISTON_0	**	**
11	00217482	2	LOCK PIN ASSEMBLY_B6	2.58	5.16
12	00111194	4	ROLLER ASSEMBLY_B	2.9	11.6
13	00104500	2	LINK ASSEMBLY_H	32.31	64.62
14	00121620	2	PIN_0	3.01	6.02
15	00121249	4	LOCK PIN WASHER_0	0.08	0.32
16	00524271	2	FLIP AXLE LINK PIN BM	0.88	1.76
17	00524180	2	FLIP AXLE LINK PIN WASHER_B	0.079	0.158
18	00366347	1	MOTOR MOUNTING BOTTOM PLATE FOR 40IN MB_14	45.38	**
19	00409360	1	MOTOR ASSEMBLY_0	**	**
20	00446848	1	ENGINE BOX COVER ASSEMBLY FOR 40IN MB_H	16.84	**
21	00501962	1	DECK APITONG WOOD_B	**	**
22	00029113	2	HINGE WITHOUT HOLE_B(GPN REQUIRED)	**	**
23	00012623	2	HINGE WITH HOLE_B	0.35	0.70
24	00007218	2	BOLT HINGE PIN_B(GPN REQUIRED)	0.16	0.32
25	00324635	1	HINGED DOOR PLATE_1	23.58	**
26	00258252	2	TOOLBOX FRONT SUPPORT PLATE_1	0.49	0.98
27	00302797	3	TOOLBOX BOTTOM SUPPORT PLATE_1_1	1.182	3.546
28	00302798	1	TOOL BOX BOTTOM 0.75in #9 EXPANDED METAL 1_7	1.04	**
29	00160794	1	TOOL BOX BOTTOM 0.75in #9 EXPANDED METAL 2_7	0.86	**
30	00163382	3	TOOLBOX BOTTOM SUPPORT PLATE_1	1.182	3.546
31	00160795	1	TOOL BOX BOTTOM L-ANGLE_2	7.66	**
32	00160796	1	0.75in#9 EXPANDED METAL VERTICAL_7	0.44	**
33	00063333	30	3in x 4in x 1in BENT D RING_B(21-214)	**	**
34	00228018	14	15IN SIDE RAIL WEB OUTRIGGER CAST LH_H	**	**
35	00228082	14	15IN SIDE RAIL WEB OUTRIGGER CAST RH_H	**	**
36	00345736	2	BOOMWELL SPACER_P	19.69	39.38
37	00519111	2	BOOMWELL C-BEND CHANNEL_14	4.78	9.56
38	00312283	2	RAMP TUBE ASSEMBLY_H6	23.45	46.9
39	00078352	2	FRONT FLIP RAMP UPPER BAR_B6	13.64	27.28
40	00314770	1	FLIP RAMP ASSEMBLY 31X18 LH_H6	98.75	**
41	00314769	1	FLIP RAMP ASSEMBLY 31X18 RH_H6	98.75	**
42	00078351	2	FRONT FLIP RAMP LOWER BAR_B6	15.21	30.42
43	00212189	2	SLIDING OUTRIGGER ASSEMBLY_H	47.88	95.76
44	00077546	2	HYDRAULIC TANK BRACKET_1	0.42	0.84
45	00530284	1	REMOVABLE FRONT BOOMWELL ASSEMBLY_H	275.73	**
46	00300619	6	3in x 3in x 1in D-RING_B(21-212)	**	**
47	00589282	1	CONTROL PLATE FOR HYDRAULIC FLIP_146	**	**
48	00344426	1	MANUAL DUMP CONTROL PLATE_14	3.13	**
49	00360379	4	D-RING MOUNTING SUPPORT_14	3.53	7.06
50	00068817	1	13in AIR TANK-HT-1301_B(11-111)	**	**
51	00534416	1	STAPLE_1	0.17	**

DRAWN: SM		DATE: 03-13-2019	ALL DIMENSIONS ARE IN INCHES UNLESS OTHERWISE SPECIFIED	MATERIAL:	WEIGHT: 18477 lb	TITLE: 181101 -55T HGG(GTBN553-54-26-HGG)_H
STRESS:			TOLERANCES UNLESS OTHERWISE SPECIFIED:	FINISH:		
CHECKED:			FRACTIONAL= +/-1/64			
APPROVED:			X.X=+/-0.1			
			X.XX=+/-0.01	GAGE CODE:		
			X.XXX=+/-0.005	SCALE: 1/75	SIZE: B	
			ANGLE=+/-0.5°	THIS DRAWING IS INTENDED FOR REVIEW AND OR AUTHORIZATION PURPOSES ONLY AND MAY NOT BE DISCLOSED, REPRODUCED OR USED WITHOUT THE EXPRESS PERMISSION OF GLOBE TRAILERS		PARENTS: 181101
A.1 INITIAL RELEASE		SM	03-13-2019			DWG NO. 00527992
REV.	DESCRIPTION	BY	DATE			REV. A.1 1/4

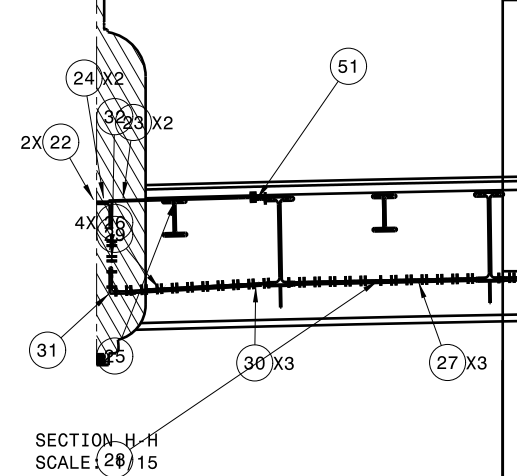
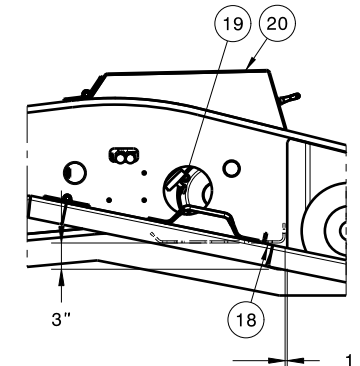
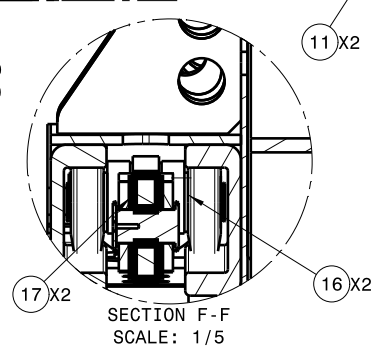
GLOBE TRAILERS

181101 -55T HGG(GTBN553-54-26-HGG)_H

DWG NO. 00527992 REV. A.1 1/4



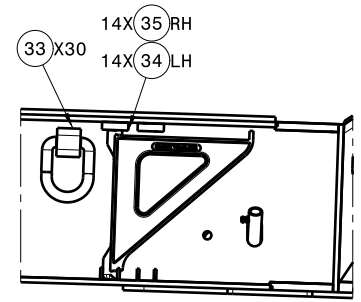
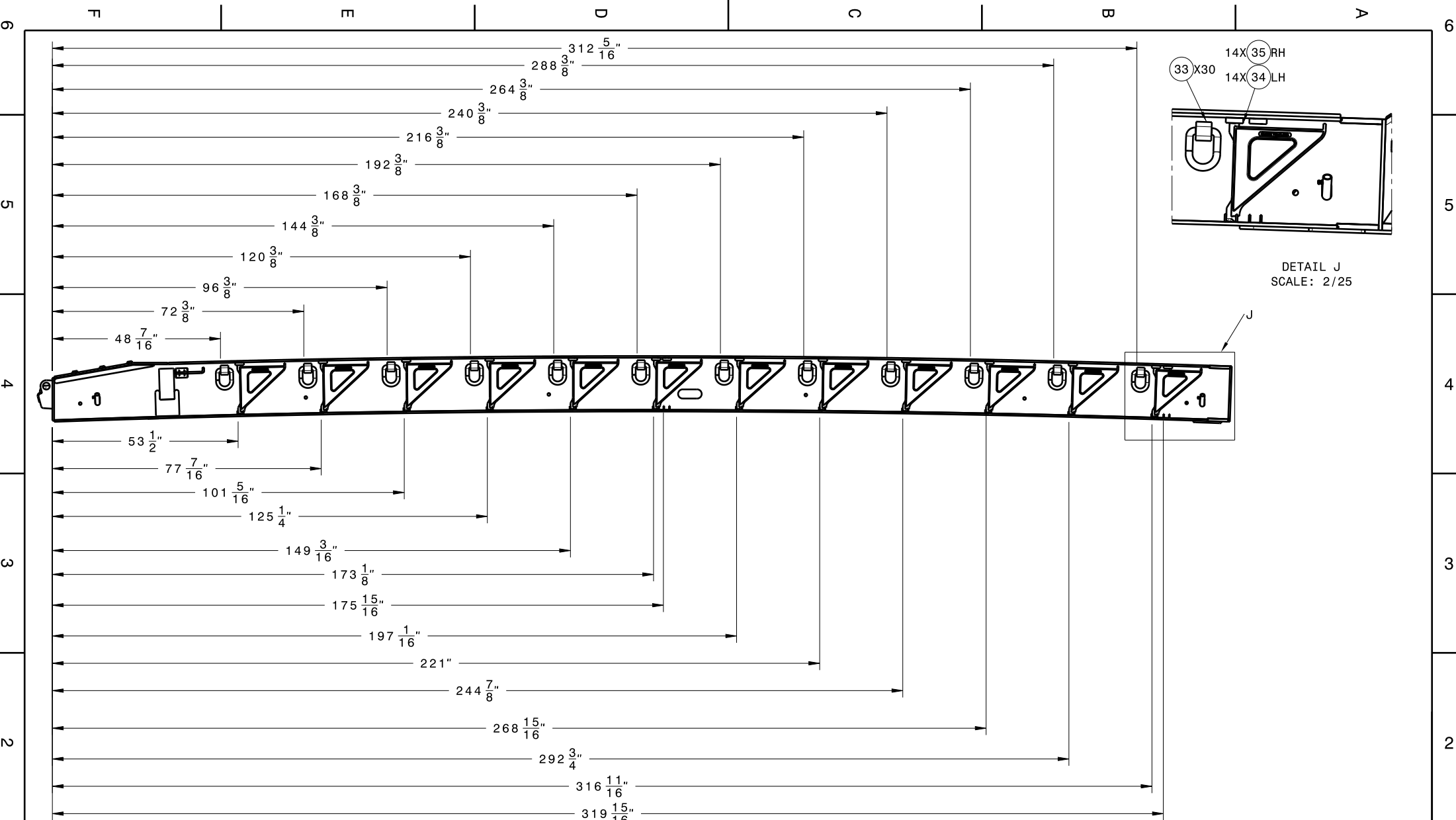
SECTION D-D
SCALE: 1/10



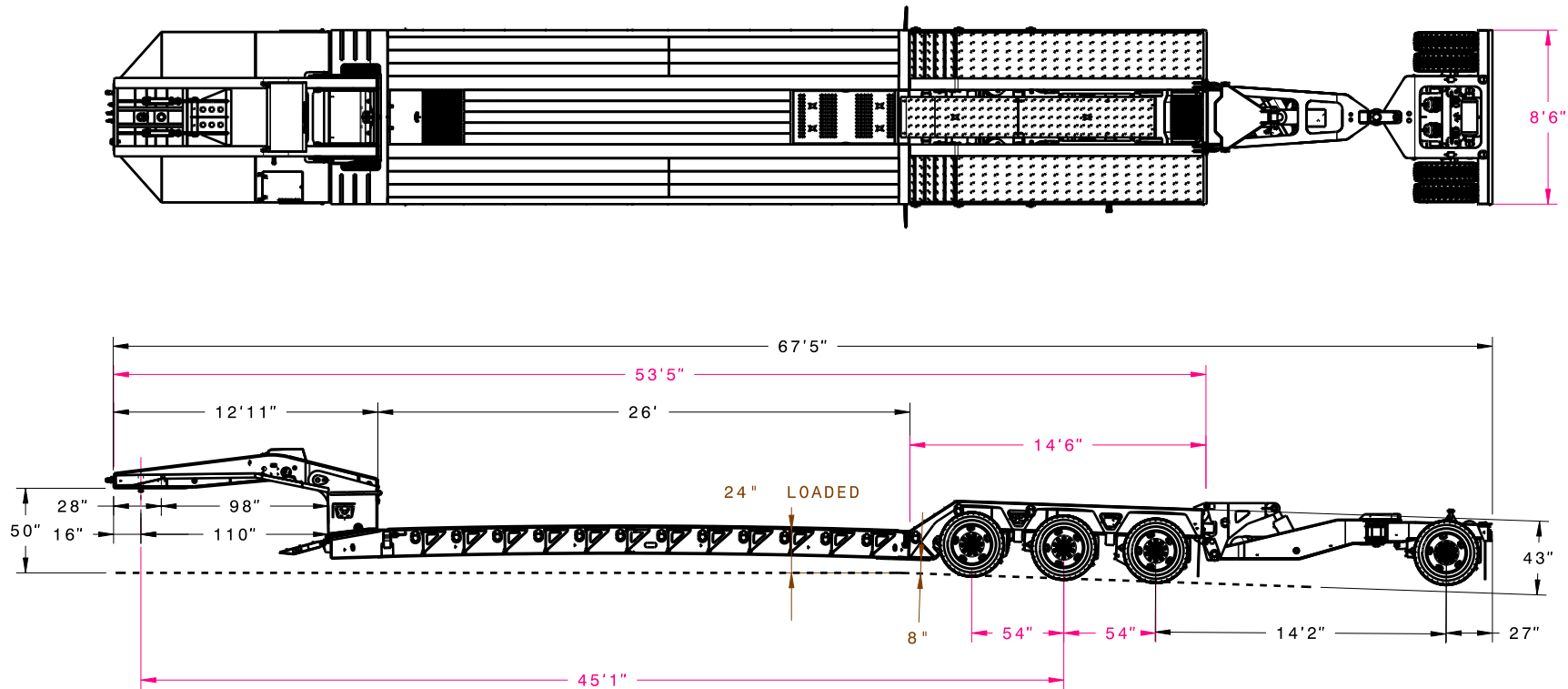
DRAWN: SM		DATE: 03-13-2019	ALL DIMENSIONS ARE IN INCHES UNLESS OTHERWISE SPECIFIED	MATERIAL:	WEIGHT: 18477 lb	GLOBE TRAILERS 181101 -55T HGG (GTBN553-54-26-HGG) H	TITLE:	181101 00527992 A.1 2/4	
STRESS:			TOLERANCES UNLESS OTHERWISE SPECIFIED:	FINISH:			THIS DRAWING IS INTENDED FOR REVIEW AND OR AUTHORIZATION PURPOSES ONLY AND MAY NOT BE DISCLOSED, REPRODUCED OR USED WITHOUT THE EXPRESS PERMISSION OF GLOBE TRAILERS		PARENTS:
CHECKED:			FRACTIONAL= +/- 1/64 X, X.X=+/- 0.1 X.XX=+/- 0.01 X.XXX=+/- 0.005 ANGLE=+/- 0.5°	GAGE CODE:	SCALE: 1/70		SIZE: B		DWG NO.:
REV. A.1	INITIAL RELEASE	SM	03-13-2019	APPROVED:				REV. A.1	SHEET 2/4

(12) X4

A



DRAWN: SM		DATE: 03-13-2019	ALL DIMENSIONS ARE IN INCHES UNLESS OTHERWISE SPECIFIED		MATERIAL:	WEIGHT: 18477 lb	GLOBE TRAILERS		TITLE: 181101 -55T HGG (GTBN553-54-26-HGG) H		
STRESS:			TOLERANCES UNLESS OTHERWISE SPECIFIED:		FINISH:				PARENTS: 181101		
CHECKED:			X.X=+/-0.1		GAGE CODE:		SCALE: 1/25	SIZE: B	THIS DRAWING IS INTENDED FOR REVIEW AND OR AUTHORIZATION PURPOSES ONLY AND MAY NOT BE DISCLOSED, REPRODUCED OR USED WITHOUT THE EXPRESS PERMISSION OF GLOBE TRAILERS		
APPROVED:			X.XX=+/-0.01				REV. SHEET		00527992		A.1 3/4
REV.	DESCRIPTION	BY	DATE	ANGLE=+/-0.5°							



NOTE:
ALL DIMENSIONS ARE NOMINAL (+/- 3")

				DRAWN: SM	DATE: 03-13-2019	ALL DIMENSIONS ARE IN INCHES UNLESS OTHERWISE SPECIFIED	MATERIAL:	WEIGHT: 18477 lb	GLOBE TRAILERS		TITLE: 181101 -55T HGG (GTBN553- 54-26-HGG) H	
				STRESS: BW	03-13-2019		FINISH:					
				CHECKED: SN	03-13-2019	TOLERANCES UNLESS OTHERWISE SPECIFIED: FRACTIONAL= +/- 1/64 X.X=+/- 0.1 X.XX=+/- 0.01 X.XXX=+/- 0.005 ANGLE=+/- 0.5°			THIS DRAWING IS INTENDED FOR REVIEW AND OR AUTHORIZATION PURPOSES ONLY AND MAY NOT BE DISCLOSED, REPRODUCED OR USED WITHOUT THE EXPRESS PERMISSION OF GLOBE TRAILERS		PARENTS: 181101	
A.1	INITIAL RELEASE	SM	03-13-2019	APPROVED: JWalters	03-13-2019		GAGE CODE:	SCALE: 1/70			SIZE: B	DWG NO. 00527992

F

A